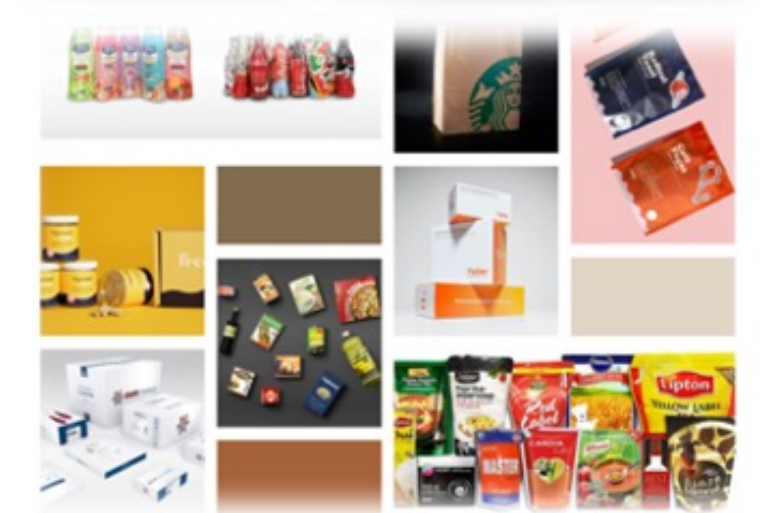


The background is a dark, blurred image of a desk. On the left, there are stacks of papers with some yellow sticky notes. On the right, the mechanical parts of a typewriter are visible. The overall lighting is dim, creating a moody atmosphere.

Folders



Worldwide leader in
flexographic printing

An Introduction :
imprinting
excellence
worldwide since
1946

An Introduction: Our history

Sri K.D. Kohli receiving
the Kohinoor Ratna

The Printer's House (TPH) Orient group is a diversified group of companies founded in 1946 that is an industry leader in the manufacturing and supply of a host of engineered products from India. A renowned and trusted name globally when it comes to quality manufacturing.

The Year was 1946. K.D. Kohli, a freedom fighter and newspaperman, started The Printers House (TPH) Orient group. Since then, TPH has carved a formidable reputation as a quality conscious technology driven manufacturer of a number of products. Tph's adherence to global standards has enabled to export its products to more than 60 countries worldwide.

All our products are produced at factories in a 20 acre campus in Delhi NCR. Tph takes pride in being a company of Indian origin, started by an enterprising freedom fighter turned Newspaperman Mr. K.D. Kohli. The TPH Orient group is now a diversified group of companies and a market leader in printing machinery, packaging machinery, printing consumables, engineering services for Defence and aerospace, and solar energy.

However, it is in our humble origins we take solace and hope to continue to grow whilst supplying a product that can match any global standard.



The TPH Family

TPH boasts an employee pool filled with skilled engineers & professionals.

TPH has 10 branch offices in major Indian cities and over 30 agents worldwide

The TPH family also extends to its loyal and crucial vendor partners , some of whom have grown with us for over 60 years.





The Global Presence

With exports to over 60 countries , TPH boasts a huge export portfolio which exemplifies our commitment to deliver high quality and high precision products with world class quality.

Jaw Type folding options

JAW TYPE 1: 2 Folder – STANDARD

- An economical, rugged 1:2 folder, capable of folding 4 webs in broadsheet/tabloid at speed up-to 16000 cph
- Mechanical Copy Counter
- Kicker for 25 copies
- Oil bath lubrication for drive side gears.
- Main drive shaft coupled with splined hub at cylinder height for minimum backlash and smooth power transmission.
- Slitter or perforator on roller as standard accessories.
- Forward or reverse lap
- Single nipping
- Single RTF roller

JAW TYPE 1:2 folder SUPER

- 1:2 folder capable of folding 8 webs (with double RTF roller) in broadsheet/tabloid at speed up-to 30000 cph.
- RTF roller, cutting cylinder and jaw cylinder dynamic balance air former.
- Double nipping roller
- Folder jam switch
- Single lights on the folder
- Main drive shafts with Thomas coupling at cylinder heights for minimum backlash and smooth power transmission
- Electronic copy counter
- Electronic good copy counter
- Kicker for 0-99 copies adjustable
- Centralized oil pressure lubrication for drive gears
- Slitter or perforator on RTF
- Grease lubrication for operating side bearings and cams
- Hardened and ground gears for folder drive and cylinder
- Lap adjustment +/- mm

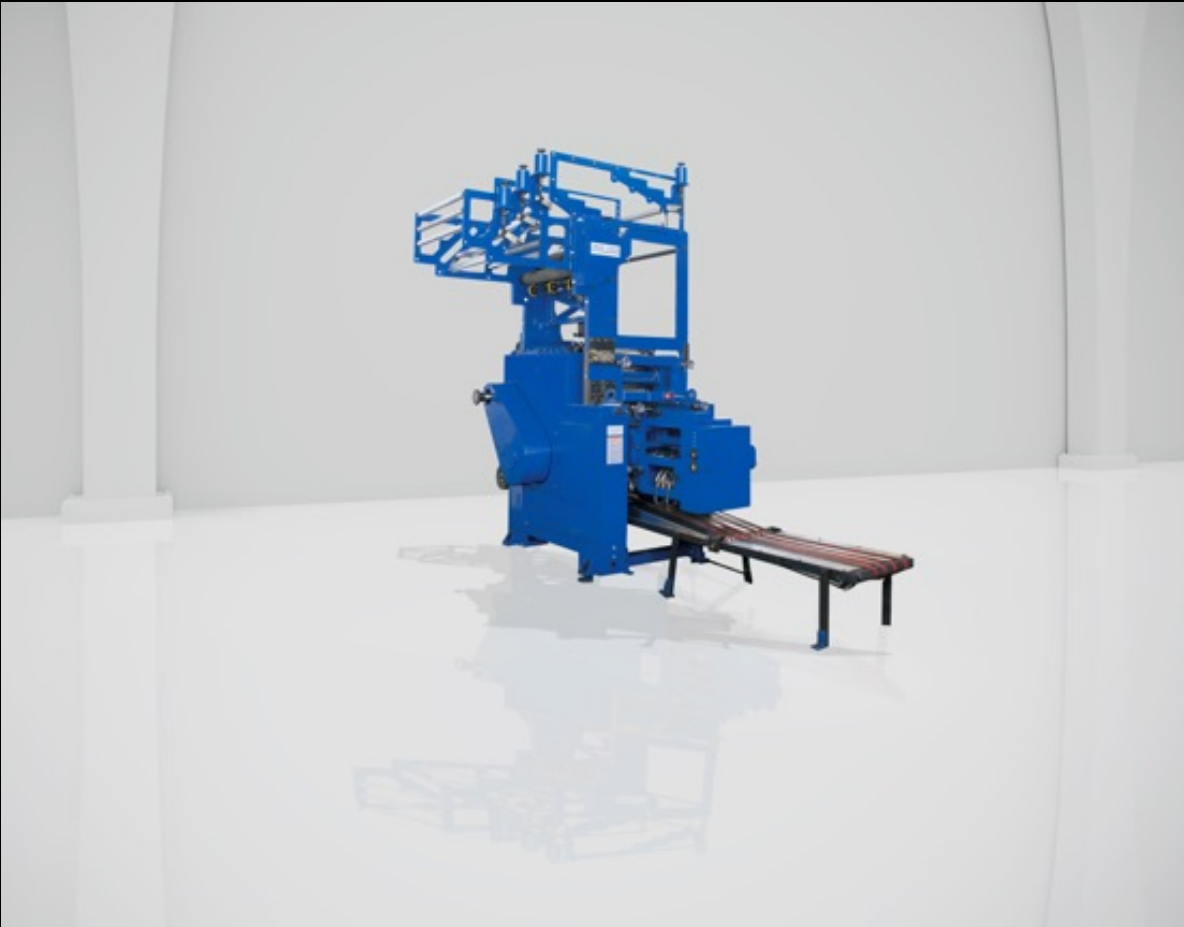
OPTIONS

- Perforator or slitter on nipping roller
- ¼ page folder



OPTIONS

- Double RTF rollers for running 8 web
- ¼ page folder
- Double Parallel folder
- Cross perforator
- Web under lead system
- Clutch on operation side of folder
- Cut-off control of folder of maximum four webs both sides
- Single shot grease lubrication for operating side bearings and cams
- Slitter or perforator on nipping rollers
- Upper former
- Fly wheel delivery for folded edge leading
- Motorized cut-off controls



Heavy duty 2:2 folder

HEAVY DUTY 2 : 2 FOLDER

2:2 Jaw type folder

- Two sets of nipping rollers
- Double RTF roller for 8 webs as standard
- Dynamically balanced RTF rollers , cutting and Jaw Cylinders.
- Pneumatic RTF trolley tyres
- Air former
- Folder jam switch and signal lights
- Electronic good copy counter and totalizer
- Case hardened gears for folder drive and cylinders
- Main drive shaft with Thomas coupling at cylinder height for minimum backlash and smooth power transmission.
- Shear pin for folder safety
- Easy silencing of folder
- Electro - pneumatic kicker adjustable for batches 10 - 99 copies
- Lap adjustment + 10 mm

OPTIONS

- Double parallel fold with or without cross perforator
- ¼ Page Folder
- Web under lead
- Cut off compensator for maximum 8 webs (4 on reverse side and 4 on normal side)
- Single shot grease lubrication for operating side bearings and cam.
- Fly wheel delivery for folded edge leading



Tucker Folder

TUCKER FOLDER

- A heavy-duty tucker folder capable of folding up-to 10 webs (with ballon former) in broadsheet or tabloid at speeds upto 50000 cph
- Spring loaded ,double nipping rollers
- Provision for Lap fold
- Long air former with conical nose (70 degrees) or short former
- Two RTF rollers with Pneumatic trolley
- Heavy duty timer belts for positive smooth drive of RTF and folder
- Fly delivery for folded edge leading
- Hardened and ground helical gear drive
- Electropneumatic kicker adjustable for batches between 10 - 99 copies
- Delivery Jam switch
- Easy silencing of folder
- Shear pin for folder safety

OPTIONS

- Upper former / ballon former

Technical Specifications

		Broadsheet		Tabloid		Quarterfold (Magazine)		Double Parallel or Digest (2-on)	
Folder	Type	Max. Speed cph	Max. No. of Webs	Max. Speed cph	Max. No. of Webs	Max. Speed cph	Max. No. of Webs	Max. Speed cph	Max. No. of Webs
Standard	JAW (1:2)	16,000	4	16,000	4	12,000	2	N. A.	N. A.
Super	JAW (1:2)	30,000	6 8*	30,000	6	24,000	4	22,000	2
Xcel	JAW (2:2)	36,000	8*	36,000	8	30,000 -	4 -	22,000 -	2 -
Tucker	Rotary (1:2)	50,000	10**	50,000	10**	N. A.	N. A.	N. A.	N. A.
X-Press 50 [†]	JAW (1:2:2)	50,000	12***	50,000	12***	35,000	4	35,000	2

*8 webs with Double RTF roller , ** 10 webs with upper former , *** 12 webs with upper former

† Half page folder(max .12 webs) Total weight of all webs not to exceed 576 g/sq.m ,paper thickness not to exceed 0.1mm

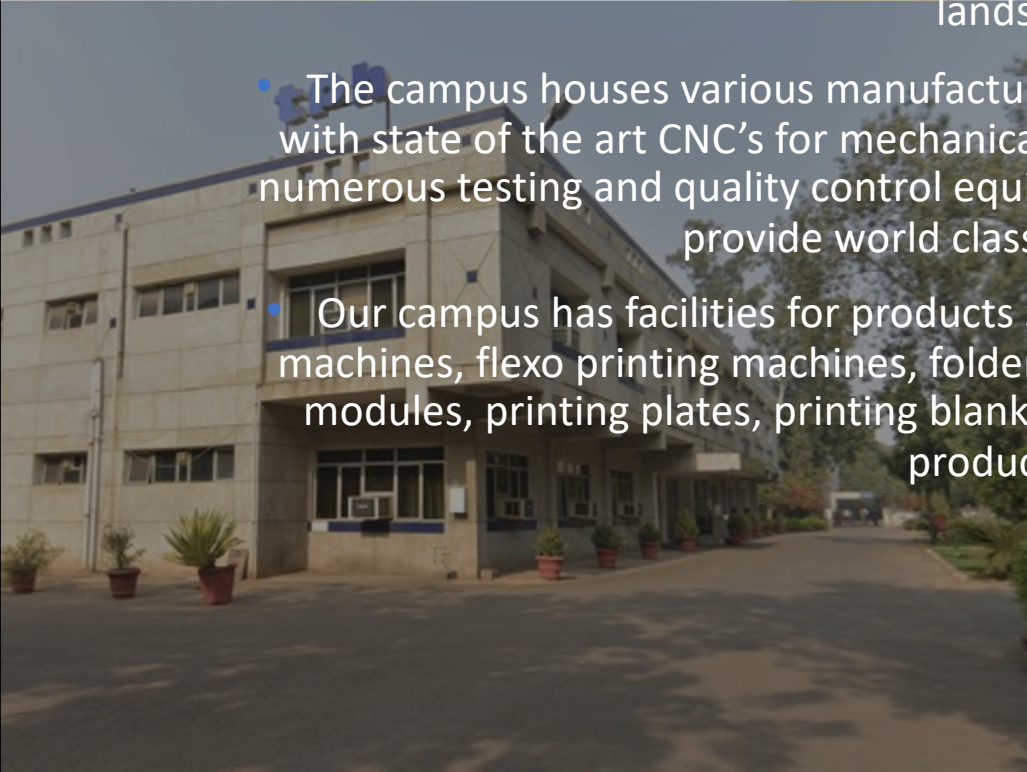

Quarter folder(max .4 webs) Total weight of all webs not to exceed 225 g/sq.m ,paper thickness not to exceed 0.1mm

Double parallel folder(max .2 webs) Total weight of all webs not to exceed 180 g/sq.m ,paper thickness not to exceed 0.13mm

**TPH reserves the right to vary specifications of ORIENT presses without prior information resulting from



Manufacturing facilities

- The TPH Orient group manufacturing campus spans 20 acres in area with lush green landscape
 - The campus houses various manufacturing units including a CNC workshop fitted with state of the art CNC's for mechanical engineering purposes. Additionally our numerous testing and quality control equipment and pool of engineers allows us to provide world class products globally.
 - Our campus has facilities for products such as printing chemicals, offset printing machines, flexo printing machines, folder gluers , die cutters, high efficiency solar modules, printing plates, printing blankets, defense and aerospace engineered products etc.
- 
- 



Our Patrons

Our distinguished Patrons

hindustantimes अमर उजाला

दैनिक भास्कर दैनिक जागरण

लोकमत The Indian EXPRESS नव भारत

राजस्थान पत्रिका The Tribune

दिव्य भास्कर मञ्जु रेPRO

ভ্রাত্ত্ব সংঘ

ধপাঙ্গ কীৰ্ত্তিকা

సమస్త తెలంగాణ దాయకం

ദേശഭിമാനി സകാൽ

The Herald PUNCH

LeDEFI MEDIAGROUP The Daily Star

প্রথম আলো বর্তমান

মানবকণ্ঠ সুপ্রভাত

আজাদী

With over 20,000 printing units supplied worldwide TPH enjoys strong relationships with some of the most distinguished and reputed commercial printers, publishers, and news houses in the world.

Our contact details

The Printers House (P) Ltd
10 , Scindia House
Connaught Place , New Delhi , India
Tel : + 91-11-23313071-73
Fax : + 91-11- 23310490
Email : tphho@tphorient.com
URL : www.tphorient.com