

A person's hands are shown holding a glowing, fiery Earth against a dark space background filled with stars. The Earth is the central focus, with bright orange and yellow light emanating from its surface. The hands are positioned at the bottom, supporting the planet. The overall mood is one of care and global responsibility.

THE PRINTERS
HOUSE

ORIENT

Imprinting Excellence Worldwide Since 1946

tph



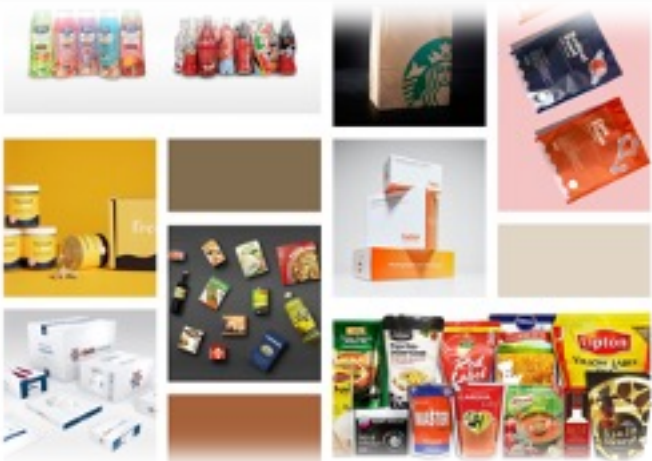
Orient X- Press Cut

A range of fully automatic
Die Cutters

A TPH ORIENT GROUP PRODUCT



An Introduction :
imprinting
excellence
worldwide since
1946



An Introduction: Our history

The Printer's House (TPH) Orient group is a diversified group of companies founded in 1946 that is an industry leader in the manufacturing and supply of a host of engineered products from India. A renowned and trusted name globally when it comes to quality manufacturing.

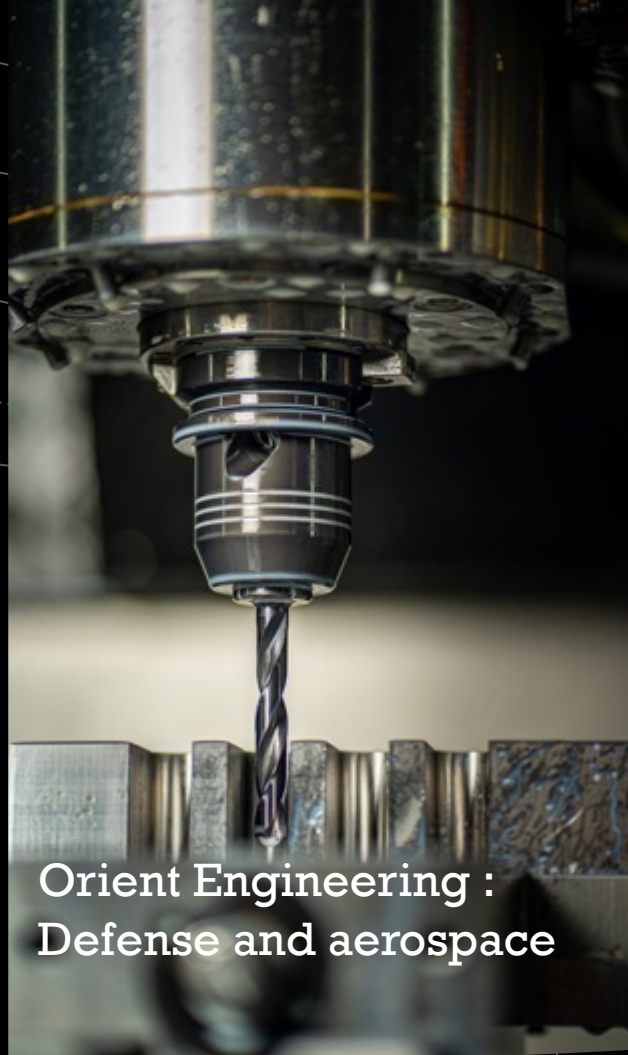
The Year was 1946. K.D. Kohli, a freedom fighter and newspaperman, started The Printers House (TPH) Orient group. Since then, TPH has carved a formidable reputation as a quality conscious technology driven manufacturer of a number of products. Tph's adherence to global standards has enabled to export its products to more than 60 countries worldwide.

All our products are produced at factories in a 20 acre campus in Delhi NCR. Tph takes pride in being a company of Indian origin, started by an enterprising freedom fighter turned Newspaperman Mr. K.D. Kohli. The TPH Orient group is now a diversified group of companies and a market leader in printing machinery, packaging machinery , printing consumables , engineering services for Defence and aerospace, and solar energy.

However, it is in our humble origins we take solace and hope to continue to grow whilst supplying a product that can match any global standard.



**Orient Offset : Web
Offset Printing Presses**



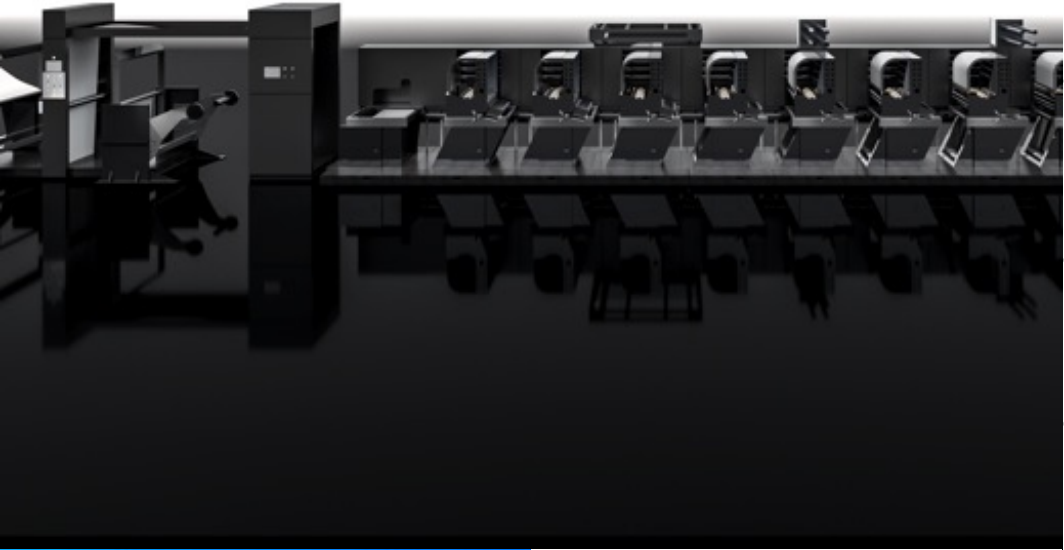
**Orient Engineering :
Defense and aerospace**



**Orient NexGen : Printing
chemicals, plates, and
consumables**

Our Segments

Orient Flex : Narrow, mid, and wide web flexographic printing machines for packaging



ADM Orient renewables : High efficiency solar panels and allied products

Orient Packaging : A range of folder gluers, die cutters, and auto-flute laminators



Our
Segments

The background of the slide is a dark, close-up photograph of a printing press mechanism, showing various rollers and gears. A white rectangular text box is positioned on the left side, containing the main title. The text is in a clean, sans-serif font, with the year '1946' highlighted in red.

Orient X-Press
Cut : A proud
history of trust
and innovation

*The Orient X-Press Cut offers immense versatility and flexibility along with a customer centric design that puts ease of operation at paramount importance for our patrons and their operators. With the Orient groups history since **1946** of supplying and manufacturing precision equipment for the printing and packaging sectors , the Orient X-Press Cut embodies our commitment to quality and precision.*





A tradition of expertise

The Orient X-Press cut series is a piece of equipment that has been created and perfected after years of painstaking innovation and understanding of the printing and packaging manufacturing process.

- Since **1946** the TPH Orient group has been the leader in various engineered products for the printing and packaging industry and was one of the proud pioneers of the Indian Printing industry.
- The X-Press Cut is an extension of its product line for the growing need in the packaging industry for high precision and good value.
- The TPH Orient group has installations in over 60 countries and 10 offices in India and multiple offices worldwide. Our tradition of service and dedication to our craft helps our patrons achieve their goals and we are proud to be able to be their partners in their journey.

1. The **Orient Quick feed system** for efficient and rapid substrate feeding.

2. An **all encompassing** die cutting unit that ensures efficiency and quality

3. A **cutting edge** stripping unit to for a smooth and seamless experience.

4. A **reliable** delivery system

5. An **innovative** automation and HMI system

5 Key functions that contribute to the X-Press cuts **world class performance**

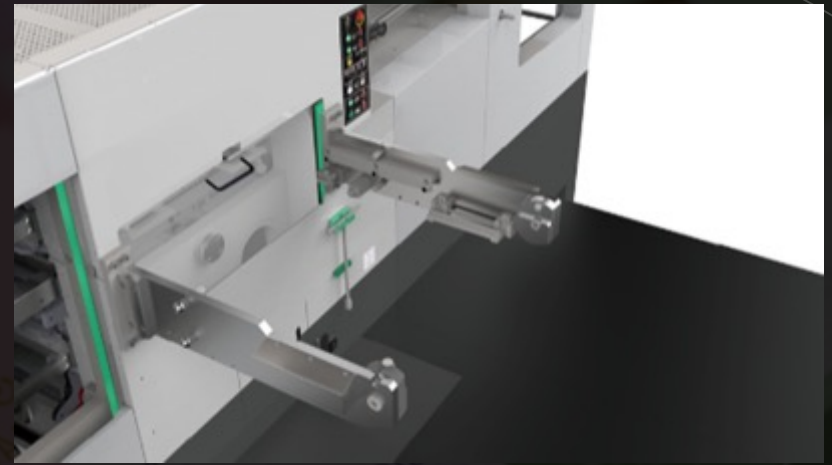
Feeding unit :
**quick and
seamless**



Ensuring minimal make ready time and quick and seamless feeding is a crucial function of this machine. Our innovative air distribution system , adjustable and automated functions, and user friendly design ensures improved ROI's and reduced wastage. The X-Press Cut focuses on quick ROI's through efficient engineering and strict quality control measures.



Die-Cutting
unit : **Quality
and precision**



In today's ever competitive landscape , quality and accuracy is no longer a luxury but a necessity. The heart of the Die-Cutting machine i.e. the cutting unit has been designed so as to ensure precision and high quality with every cut. It is due to this unit that the customer can experience the full benefits of the Orient X-Press Cut and its unmistakably remarkable ROI generation and precision during use.



Stringing
unit :
innovative
and time
saving

The innovative 3 action movement structure in our stringing unit ensures accuracy and most of all reduces changeover times due to our centerlining system. Additionally, even delicate materials can be stripped perfectly at high speeds.



Delivery
section :
constant and
reliable



Our automatic delivery system with a five section adjustable brush brake ensures a hassle free delivery experience during the final stage of production on a die cutting machine. This stage also ensures that the rest of the machine is able to perform at its maximum mechanical and electronic capacity , hence improving ROI's.



Orient X-
Press Cut
HMI :
Automation
leading the
way

- The X-Press cut is a fully automated machine with a state of the art man-machine interface. This interface allows the machine to house multiple types of automation and synchronize the in order to achieve improved ROI's and high speeds with strict quality control checks. Our interface is user friendly and is focused on making the experience intuitive for any operator to easily use.



Orient X-Press Cut :
Trusted engineering
leading to performance

Maximum sheet size	1060×750mm
Minimum sheet size	380×380mm
Maximum cutting size	1040×720mm
Inside chase	1120×760mm
Maximum speed	7500 sheets/hour
Maximum pressure	300 tons
Sheet thickness	120g/m ² ~ up to 4mm B flute corrugated paper
Minimum gripper margin	9 mm
Max. pile height at feeder	1600mm
Max. pile height at delivery	1350mm
Main motor power	11kw
Total power	22kw
Dimension (L × W × H) including platform	6000×4150×2300mm
Weight:	18.5 tons

■ **Technical Specification : Orient X-Press Cut ASR 1060**

Max Sheet Size	1060*740mm
Min Sheet Size	400*360mm
Max Diecutting Size	1040*730mm
Diecut Chase Size	1120*760mm
Paper Range	100-2000g/m2 Corrugate : Max 4mm Thickness
Gripper Margin	9.5 mm
Max Machine Speed	7500 Sheet/h
Max Pressure	300 Ton
Max. feeder file	1450mm
Max delivery file	1100mm
Power requirement	380V 50Hz
Total Weight	16 Ton
Dimension	6000*4200*2400mm
Machine Power	23kw

■ Technical Specification : Orient X-Press Cut SHU 1060

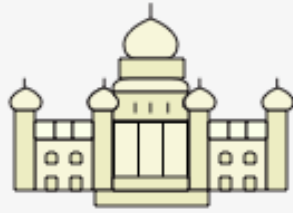


The TPH Family

- TPH boasts an employee pool filled with skilled engineers & professionals.
- TPH has 10 branch offices in major Indian cities and over 30 agents worldwide
- The TPH family also extends to its loyal and crucial vendor partners , some of whom have grown with us for over 60 years.



Ahmedabad



Bangalore



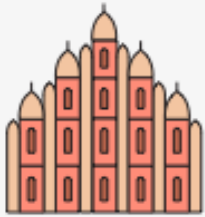
Chennai



Delhi



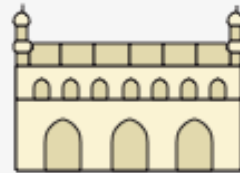
Hyderabad



Trivandrum



Kolkatta



Kottayam



Mumbai



Orissa

The TPH Family:
Domestic Sales
Network

- With 10 offices in prime locations across India TPH proudly marks its presence across the country.

Unit 2: Assembly center



Unit 1 : Machining center



Unit 3 : New Development

Manufacturing facilities

- The TPH factory spans 16 acres in area with lush green landscape
- The first unit houses the State- of- the- art Manufacturing facility comprising of various CNC machines, pre –assembly of equipment, along with a design center backed by the latest auto CAD and 3D modeling systems.
- The Second unit is dedicated for the final assembly of various products. In house painting facilities ensure aesthetics and finish quality of the product at all times.
- Unit three had automation and development centers for new products however in 2020 this has been moved to unit 2 and unit 3 has now been earmarked for new product assembly only.

Quality Standards

TPH is an **ISO 9001:2008** company

TPH also has certification

OHSAS 18001:2007

for health and safety Management System.

&

ISO 14001:2004

for Environmental Management System.

Over **3,000** quality checks are conducted for optimum performance



- The TPH Orient group manufacturing campus spans 20 acres in area with lush green landscape
- The campus houses various manufacturing units including a CNC workshop fitted with state of the art CNC's for mechanical engineering purposes. Additionally our numerous testing and quality control equipment and pool of engineers allows us to provide world class products globally.
- Our campus has facilities for products such as printing chemicals, offset printing machines, flexo printing machines, folder gluers , die cutters, high efficiency solar modules, printing plates, printing blankets, defense and aerospace engineered products etc.



Manufacturing facilities





The Global Presence

With exports to over 60 countries ,
TPH boasts a huge export portfolio
which exemplifies our commitment
to deliver high quality and high
precision products with world class
quality.

Our Contact Details

The Printers House (P) Ltd.

10, Scindia House,

Connaught Place, New Delhi, (India)

Tel: +91-11-23313071-73

Fax: +91-11-23310490

Email : tphindia@bol.net.in

/tphho@tphorient.com

URL : www.tph.co.in